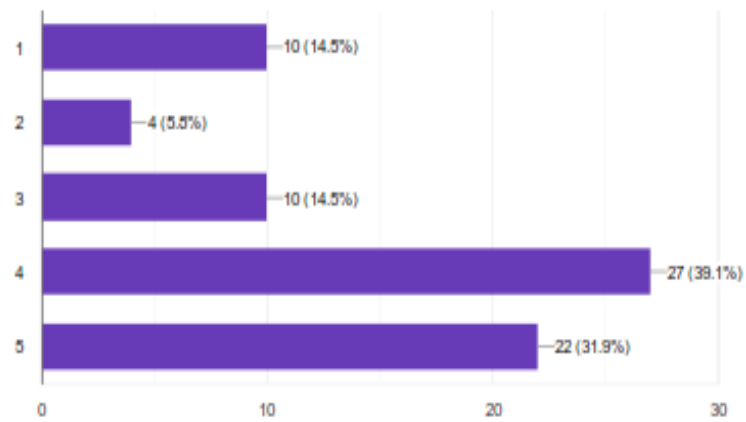


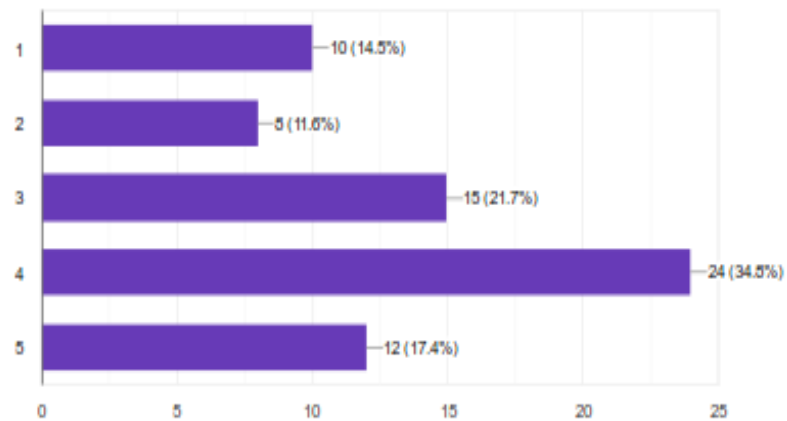
1. Curriculum meets the prerequisite and basic knowledge required for the career.

69 responses



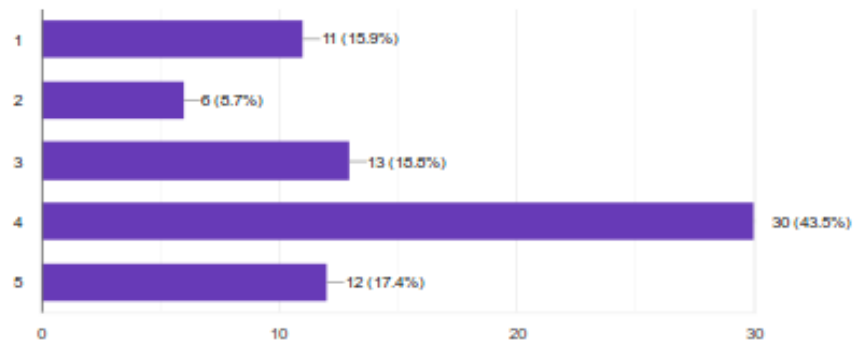
2. Course curriculum is employability oriented.

69 responses



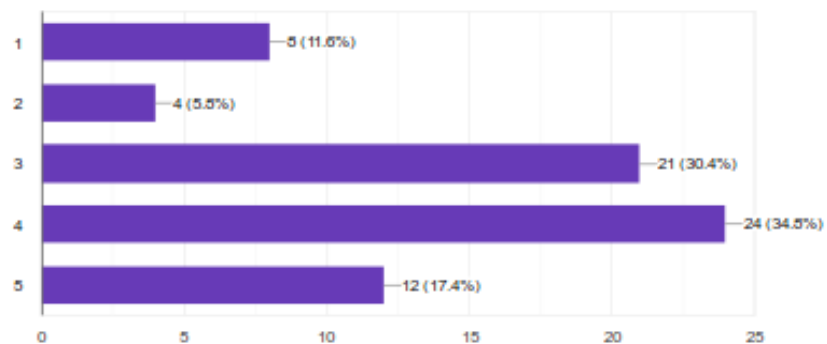
3. Electives offered are as per the technological advancements and skill oriented.

69 responses



4. Courses meet the contemporary requirements.

69 responses



5. Design of the course promotes self learning and are as per the local / regional / national / global needs.

69 responses

